

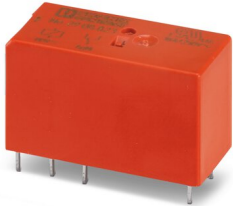
# REL-MR-110DC/21HC/EX - Single relay



2908823

<https://www.phoenixcontact.com/us/products/2908823>

Please be informed that the data shown in this PDF document is generated from our Online Catalog. Please find the complete data in the user documentation. Our General Terms of Use for Downloads are valid.



Plug-in miniature power relay, RT III sealed with power contacts, 1 changeover contact, input voltage: 110 V DC, in connection with the corresponding PLC base approved in accordance with ATEX/IECEx (zone 2) and Ex zone class I, div. 2.

## Your advantages

- Switching current of up to 16 A
- RT III-proof (wash-proof)

## Commercial Data

Item number	2908823
Packing unit	1 pc
Minimum order quantity	10 pc
Note	Made to Order (non-returnable)
Sales Key	C460
Product Key	CK6195
GTIN	4055626345178
Weight per Piece (including packing)	15.9 g
Weight per Piece (excluding packing)	15.9 g
Customs tariff number	85364900
Country of origin	AT

# REL-MR-110DC/21HC/EX - Single relay



2908823

<https://www.phoenixcontact.com/us/products/2908823>

## Technical Data

### Product properties

Product type	Single relay
Operating mode	100% operating factor
Mechanical service life	3x 10 <sup>7</sup> cycles

### Insulation characteristics

Overvoltage category	III
Pollution degree	3

### Electrical properties

Service life electrical	see diagram
Maximum power dissipation for nominal condition	0.45 W
Test voltage (Winding/contact)	5 kV AC (50 Hz, 1 min., winding/contact)

### Input data

#### Coil side

Nominal input voltage $U_N$	110 V DC
Input voltage range	71.5 V DC ... 264 V DC
Drive and function	monostable
Drive (polarity)	non-polarized
Typical input current at $U_N$	4.1 mA
Typical response time	7 ms
Typical release time	3 ms
Coil resistance	26600 $\Omega$ $\pm$ 15 % (at 20 °C)

### Output data

#### Switching

Contact switching type	1 changeover contact
Type of switch contact	Single contact
Contact material	AgNi
Maximum switching voltage	250 V AC/DC
Minimum switching voltage	12 V (at 10 mA)
Limiting continuous current	16 A
Maximum inrush current	50 A (20 ms)
Min. switching current	10 mA (at 12 V)
Interrupting rating (ohmic load) max.	384 W (at 24 V DC)
	58 W (at 48 V DC)
	48 W (at 60 V DC)
	50 W (at 110 V DC)
	80 W (at 220 V DC)
	4000 VA (for 250 V AC)

# REL-MR-110DC/21HC/EX - Single relay



2908823

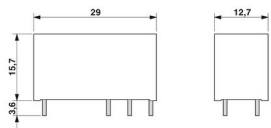
<https://www.phoenixcontact.com/us/products/2908823>

Switching capacity	2 A (at 24 V, DC13)
	0.2 A (at 110 V, DC13)
	0.2 A (at 250 V, DC13)
	6 A (at 24 V, AC15)
	6 A (at 120 V, AC15)
	6 A (at 250 V, AC15)

## Connection data

Connection method	Plug / solder connection
-------------------	--------------------------

## Dimensions

Dimensional drawing	
Width	12.7 mm
Height	29 mm
Depth	15.7 mm

## Environmental and real-life conditions

### Ambient conditions

Degree of protection	RT III
Ambient temperature (operation)	-40 °C ... 85 °C
Ambient temperature (storage/transport)	-40 °C ... 85 °C

## Approvals

### Corrosive gas test

Identification	ISA-S71.04. G3 Harsh Group
	EN 60068-2-60

## Standards and regulations

Standards/regulations	IEC 60664
	EN 50178
	EN 61810-1

## Mounting

Assembly instructions	Can be aligned without spacing ( $> 70\text{ °C} \geq 2.5\text{ mm}$ )
Mounting position	any

# REL-MR-110DC/21HC/EX - Single relay

2908823

<https://www.phoenixcontact.com/us/products/2908823>



Phoenix Contact 2023 © - all rights reserved

<https://www.phoenixcontact.com>

Phoenix Contact USA  
586 Fulling Mill Road  
Middletown, PA 17057, United States  
(+717) 944-1300  
[info@phoenixcon.com](mailto:info@phoenixcon.com)