

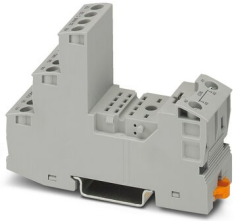
# RIF-2-BSC/4X21 - Relay base



2900932

<https://www.phoenixcontact.com/in/products/2900932>

Please be informed that the data shown in this PDF document is generated from our Online Catalog. Please find the complete data in the user documentation. Our General Terms of Use for Downloads are valid.



RIF-2... relay base, for industrial relay with 2 or 4 changeover contacts, screw connection, plug-in option for input/interference suppression modules, for mounting on NS 35/7,5

## Commercial Data

Item number	2900932
Packing unit	10 pc
Minimum order quantity	10 pc
Sales Key	CK6
Product Key	CK6513
Catalog Page	Page 299 (C-5-2019)
GTIN	4046356733168
Weight per Piece (including packing)	75.3 g
Weight per Piece (excluding packing)	68 g
Customs tariff number	85366990
Country of origin	CN

# RIF-2-BSC/4X21 - Relay base



2900932

<https://www.phoenixcontact.com/in/products/2900932>

## Technical Data

### Product properties

Product type	Relay socket
Product family	RIFLINE complete

### Electrical properties

Nominal voltage $U_N$	250 V AC/DC
Nominal current $I_N$	max. 12 A (Depends on application/assembly)
Protective circuit	depending on the selected input/suppressor modules

### Connection data

Connection method	Screw connection
Stripping length	8 mm
Conductor cross section rigid	0.5 mm <sup>2</sup> ... 4 mm <sup>2</sup>
Conductor cross-section rigid (2 conductors with same cross section)	0.5 mm <sup>2</sup> ... 2.5 mm <sup>2</sup>
Conductor cross section flexible	0.5 mm <sup>2</sup> ... 4 mm <sup>2</sup> 0.5 mm <sup>2</sup> ... 4 mm <sup>2</sup> (Ferrule with plastic sleeve)
Conductor cross section flexible (2 conductors with same cross section)	0.5 mm <sup>2</sup> ... 2.5 mm <sup>2</sup> 0.5 mm <sup>2</sup> ... 1.5 mm <sup>2</sup> (TWIN ferrule with plastic sleeve)
Conductor cross section AWG	20 ... 10 (solid) 20 ... 12 (flexible)
Tightening torque	0.5 Nm ... 0.6 Nm

### Dimensions

Width	27 mm
Height	89 mm
Depth Retaining bracket	75 mm (with retaining bracket)

### Material specifications

Flammability rating according to UL 94	V2 (Housing)
--	--------------

### Environmental and real-life conditions

#### Ambient conditions

Ambient temperature (operation)	-40 °C ... 85 °C (Depends on application/assembly)
Ambient temperature (storage/transport)	-40 °C ... 85 °C

### Approvals

#### Corrosive gas test

Identification	ISA-S71.04. G3 Harsh Group EN 60068-2-60
----------------	---

# RIF-2-BSC/4X21 - Relay base



2900932

<https://www.phoenixcontact.com/in/products/2900932>

## Mounting

Mounting type	DIN rail mounting
Mounting position	any

Phoenix Contact 2023 © - all rights reserved

<https://www.phoenixcontact.com>

PHOENIX CONTACT (I) Pvt. Ltd.

A-58/2, Okhla Industrial Area, Phase - II, New Delhi-110 020

+91.1275.71420

[info@phoenixcontact.co.in](mailto:info@phoenixcontact.co.in)