

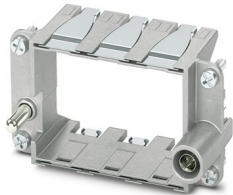
HC-M-B10-MFH-B - Module carrier frame



1182088

<https://www.phoenixcontact.com/in/products/1182088>

Please be informed that the data shown in this PDF document is generated from our Online Catalog. Please find the complete data in the user documentation. Our General Terms of Use for Downloads are valid.



Module carrier frame, size: B10, type : for the panel mounting side (a, b, c, ...), 4 mm² ... 6 mm², application: Module carrier frame

Commercial Data

Item number	1182088
Packing unit	1 pc
Minimum order quantity	1 pc
Sales Key	BF7
Product Key	BF7ACD
GTIN	4063151218874
Weight per Piece (including packing)	61 g
Weight per Piece (excluding packing)	60.7 g
Customs tariff number	85389099
Country of origin	CN

HC-M-B10-MFH-B - Module carrier frame



1182088

<https://www.phoenixcontact.com/in/products/1182088>

Technical Data

Notes

General	This product replaces 1417399 HC-M-B10-MF-B
---------	---

Product properties

Type	B10
Product type	Module carrier frame
Application	Module carrier frame
Number of module slots	3
Type	for the panel mounting side (a, b, c, ...)
Series	HC-M-B HC-M-02 HC-M-03 HC-M-03/04 HC-M-04 HC-M-05 HC-M-06 HC-M-08 HC-M-08-GBIT HC-M-12 HC-M-17 HC-M-20 HC-M-25 HC-M-DSUB HC-M-EMV HC-M-HV HC-M-HS HC-M-00
Frame type	Module carrier frame

Electrical properties

Min. AWG, flexible, multi-strand	12
----------------------------------	----

Connection data

Conductor connection

Conductor cross section	4 mm ² ... 6 mm ² (for PE conductor - power side)
	1 mm ² ... 2.5 mm ² (for PE conductor - control side)
Connection cross section AWG	12 ... 10 (for PE conductor - power side)
	18 ... 14 (for PE conductor - control side)
Tightening torque	0.5 Nm ... 0.8 Nm (Mounting screws for mounting in the HEAVYCON housing)

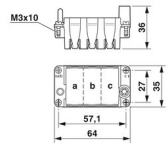
HC-M-B10-MFH-B - Module carrier frame



1182088

<https://www.phoenixcontact.com/in/products/1182088>

Dimensions

Dimensional drawing	
Width	34.9 mm
Height	36 mm
Length	64 mm

Material specifications

Color	silver
Contact carrier material	Die-cast zinc alloy

Mechanical properties

Mechanical data

Insertion/withdrawal cycles	≥ 500
-----------------------------	-------

Environmental and real-life conditions

Ambient conditions

Ambient temperature (operation)	-40 °C ... 125 °C
---------------------------------	-------------------

Mounting

Assembly instructions	HC-MHR-PE16 (1636981) for PE connection extension to 16 mm ² .
	Use wire end protection for PE wires (PE connection screws without wire protection) for housings without lateral connectors, max. thread length of the screw connection 12 mm
	When using the module carrier frame in metal housings, the connection of the PE conductor must be ensured via the PE connection provided on the module carrier frame or via a special metal PE module

Phoenix Contact 2023 © - all rights reserved
<https://www.phoenixcontact.com>

PHOENIX CONTACT (I) Pvt. Ltd.
A-58/2, Okhla Industrial Area, Phase - II, New Delhi-110 020

+91.1275.71420
info@phoenixcontact.co.in