

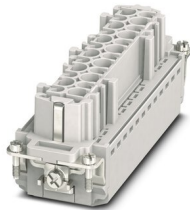
HC-B24-I-PT-F - Contact insert



1407735

<https://www.phoenixcontact.com/in/products/1407735>

Please be informed that the data shown in this PDF document is generated from our Online Catalog. Please find the complete data in the user documentation. Our General Terms of Use for Downloads are valid.



Contact insert, number of positions: 24+PE, size: B24, number of connections per position: 1, Socket, Push-in connection, 500 V, 16 A, 0.14 mm² ... 2.5 mm², application: Power

Your advantages

- Easy installation without tools, even when mounted, with push-in connection technology
- Shortest installation time compared to other connection technologies
- Quick and effortless wiring, in particular when space is tight
- Automatic cabling with robots possible
- Safe wiring and operation with color-coded actuators
- Shock and vibration-resistant in accordance with DIN EN 61373
- Cost-effective and fast coding with plastic profiles
- Test connection for 2 mm test plug

Commercial Data

| | |
|--------------------------------------|---------------------|
| Item number | 1407735 |
| Packing unit | 1 pc |
| Minimum order quantity | 1 pc |
| Sales Key | BF7 |
| Product Key | BF7ABC |
| Catalog Page | Page 547 (C-2-2019) |
| GTIN | 4046356777704 |
| Weight per Piece (including packing) | 115 g |
| Weight per Piece (excluding packing) | 115 g |
| Customs tariff number | 85366990 |
| Country of origin | CN |

HC-B24-I-PT-F - Contact insert



1407735

<https://www.phoenixcontact.com/in/products/1407735>

Technical Data

Notes

| | |
|---------|--|
| General | only use flexible conductors with ferrules |
| General | Connectors may be operated only when there is no load/voltage. |

Mounting

| | |
|-----------------------|---|
| Assembly instructions | To ensure correct use, installation in housing with IP54 protection or better is required |
|-----------------------|---|

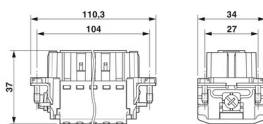
Product properties

| | |
|------------------------------------|--|
| Type | B24 B48 |
| Product type | Contact insert with a fixed no. of positions |
| Number of positions | 24 |
| Connection profile | 24+PE |
| Contact numbering | 1 - 24 |
| Application | Power |
| Number of connections per position | 1 |
| Contact type | rolled |
| Series | HC-B |

Insulation characteristics

| | |
|----------------------|-----|
| Overvoltage category | III |
| Degree of pollution | 3 |

Dimensions

| | |
|---------------------------------|--|
| Dimensional drawing |  |
| Width | 34 mm |
| Height | 37 mm |
| Length | 111 mm |
| Drill hole distance, horizontal | 104 mm |
| Drill hole distance, vertical | 27 mm |

Mechanical characteristics

| | |
|------------------|--------|
| Contact diameter | 2.5 mm |
|------------------|--------|

Electrical properties

| | |
|-----------------------|-----------------------|
| Rated voltage (III/3) | 500 V |
| Rated surge voltage | 6 kV |
| Rated current | 16 A (power contacts) |

HC-B24-I-PT-F - Contact insert



1407735

<https://www.phoenixcontact.com/in/products/1407735>

| | |
|------|----------------|
| SCCR | 5 kA (UL 2237) |
|------|----------------|

Mechanical properties

Mechanical data

| | |
|-----------------------------|-------|
| Insertion/withdrawal cycles | ≥ 500 |
|-----------------------------|-------|

Material specifications

| | |
|--|---|
| Flammability rating according to UL 94 | V0 |
| Contact material | Copper alloy |
| Contact surface material | Ag/Sn (tarnish protection) |
| Contact carrier material | PC |
| Standards/regulations | PC: Fire protection in rail vehicles - requirement sets R22, R23, and R24 acc. to DIN EN 45545-2 (Risk level HL1 - HL3) |

Environmental and real-life conditions

Ambient conditions

| | |
|---------------------------------|--|
| Ambient temperature (operation) | -40 °C ... 125 °C (including heating up of contacts) |
|---------------------------------|--|

Standards and regulations

Testing

| | |
|-----------------------|---|
| Standards/regulations | PC: Fire protection in rail vehicles - requirement sets R22, R23, and R24 acc. to DIN EN 45545-2 (Risk level HL1 - HL3) |
|-----------------------|---|

Phoenix Contact 2023 © - all rights reserved
<https://www.phoenixcontact.com>

PHOENIX CONTACT (I) Pvt. Ltd.
A-58/2, Okhla Industrial Area, Phase - II, New Delhi-110 020

+91.1275.71420
info@phoenixcontact.co.in